

SECOND CURTAIN/SLOW SYNCH

- CAMERA SETTINGS IN THE MENU CONTROLS WHEN THE FLASH FIRES DURING THE EXPOSURE. HERE'S A LINK TO A GREAT EXPLANATION OF SHUTTER/FLASH SYNCH:



- SHUTTER OPENS & FLASH FIRES = NORMAL SYNCH
- SHUTTER CLOSES & FLASH FIRES = SECOND CURTAIN
- MOST CAMERAS HAVE A PRESET MODE: NIGHT PORTRAIT
- NIGHT PORTRAIT OR NIGHT SNAPSHOT MODE FOUND ON THE PRESET DIAL OR IN THE SCENE MODE MENU CHANGES FLASH MODE TO SECOND CURTAIN SYNCH.

WHEN SECOND CURTAIN SYNCH MAKES A DIFFERENCE

- WHEN THERE IS ENOUGH AMBIENT LIGHT FOR EXPOSURE
- WHEN THERE IS A FOREGROUND SUBJECT FOR THE FLASH TO AFFECT
- WHEN THERE IS A MOVING SUBJECT IN THE IMAGE
- ESPECIALLY WHEN THE MOVING SUBJECT HAS LIGHT



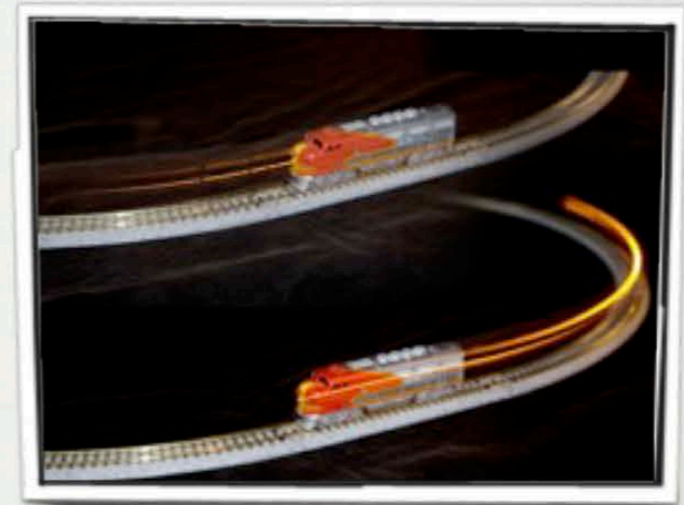
SECOND CURTAIN RESULTS

□ IN FIRST CURTAIN MODE, THE FLASH FREEZES THE ACTION THEN EXPOSURE CONTINUES WITH THE AMBIENT LIGHT.

□ IN SECOND CURTAIN MODE, THE EXPOSURE STARTS WITH AMBIENT LIGHT THEN THE FLASH FREEZES THE MOTION JUST BEFORE THE SECOND SHUTTER CLOSES.

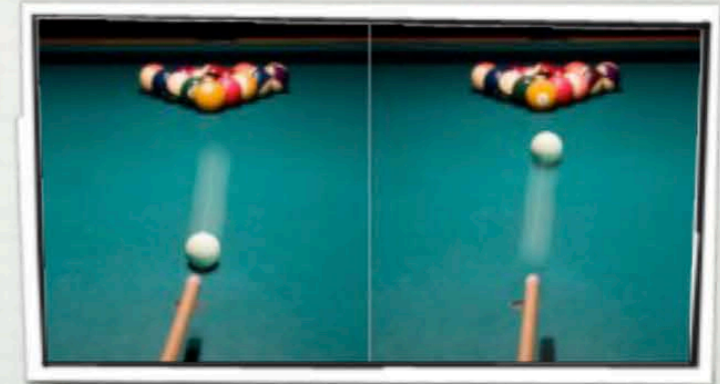
1ST
CURTAIN

2ND
CURTAIN



1ST
CURTAIN

2ND
CURTAIN



□ THE RESULT IS THAT LIGHT TRAILS THE SUBJECT IN MOTION AND PROVIDES A MORE NORMAL OR EXPECTED VIEW.