

---

ROCKBRIDGE CAMERA CLUB - MARCH 2025



# Motion in Photography

Show, Stop, Create

---



## Stop Motion



Subject captured using high speed electronic flash.

## Show Motion

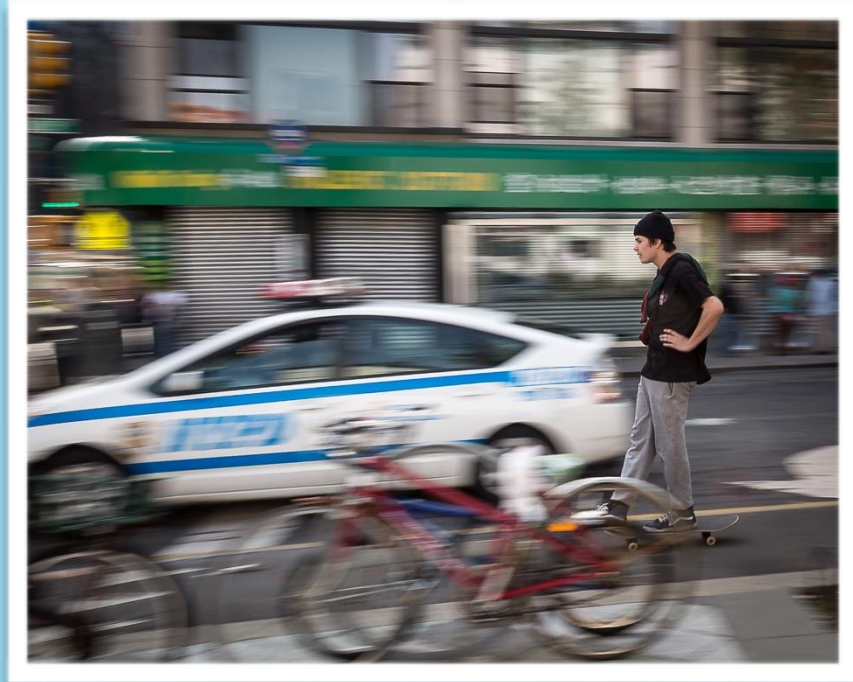


Image captured by panning with the subject in motion to blur the background.

## Create Motion



1. The trains were not in motion during the original capture.
2. Front of the trains were copied to Layer 1.
3. The entire base layer was then blurred using the Motion Blur filter. (Filter>Motion Blur)
4. A mask was placed over Layer 1 so the trains were selected and appeared sharp on top of the blurred base layer.
5. Some of the mask was then carefully concealed to allow some of the blur to show through.



## HOW TO STOP MOTION IN YOUR PHOTOS



Wildlife and nature photography often require fast shutter speeds to stop the action of your subjects.

Use a FAST Shutter Speed or an Electronic flash.

This is easy enough on your digital camera or mobile device using Burst Mode or apps like ProCamera or Even Longer.

The Burst mode on your mobile to device captures at 10 fps.

The *Pro Camera* app will let you select shutter speeds up to 1/64000.

The *Even Longer* app will let you select shutter speeds up to 1/67000.



Here are some good links for Stop Motion photography:

<https://www.youtube.com/shorts/fi9kezJ8jUw>

<https://www.youtube.com/shorts/6cyWMaz5I70>

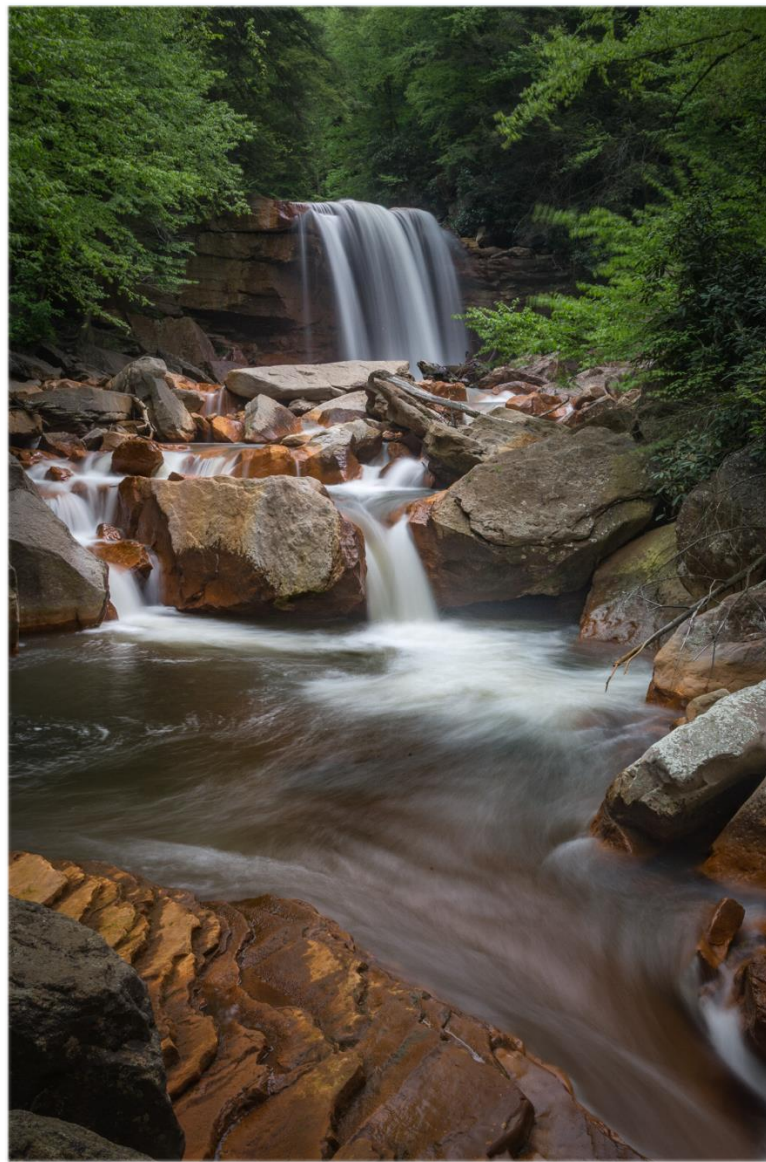
High Speed photo with flash:

<https://www.youtube.com/watch?v=GnYBBafTBVk>





## HOW TO SHOW MOTION IN YOUR PHOTOS



Use a SLOW Shutter Speed or PAN the camera with your subject.

This is easy enough on your digital camera, but is a bit of a problem on your mobile device unless you have apps like ProCamera, Slow Shutter, or Even Longer.

These apps will allow multi-second shutter speeds as well as selections for Night Mode, Star Trails, and Frame Averaging

Google You Tube for “best camera apps for long exposure” to search for options. Some are free others moderately priced.

Here are some good waterfall photo tips.

<https://www.youtube.com/watch?v=RhkJ9FnqkHs>



Long exposure seascape photos are a genre of their own. Here's a link:

<https://loadedlandscapes.com/ocean-photography-tips/>



Long exposure with moving lights provides a dramatic view with the lights streaking across or into the image.



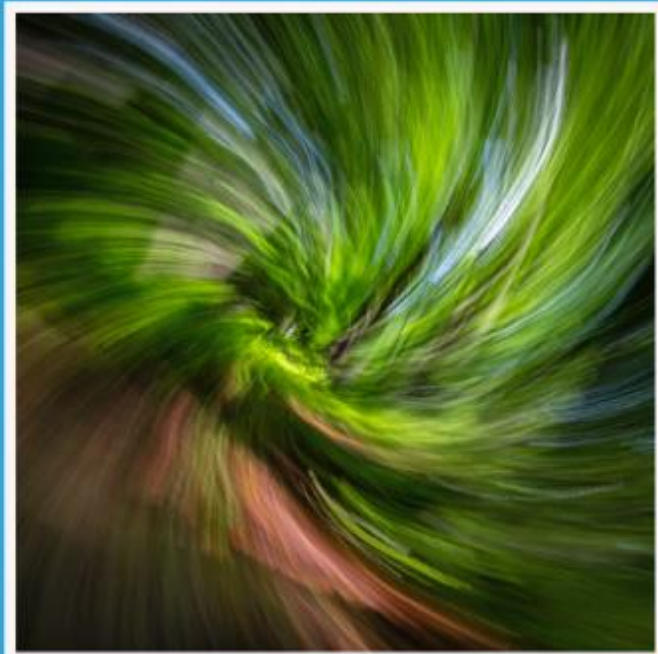
## HOW TO CREATE MOTION IN YOUR PHOTOS

### Examples of Intentional Camera Movement (ICM)

Lens Zoom During Exposure



Camera Rotation During Exposure

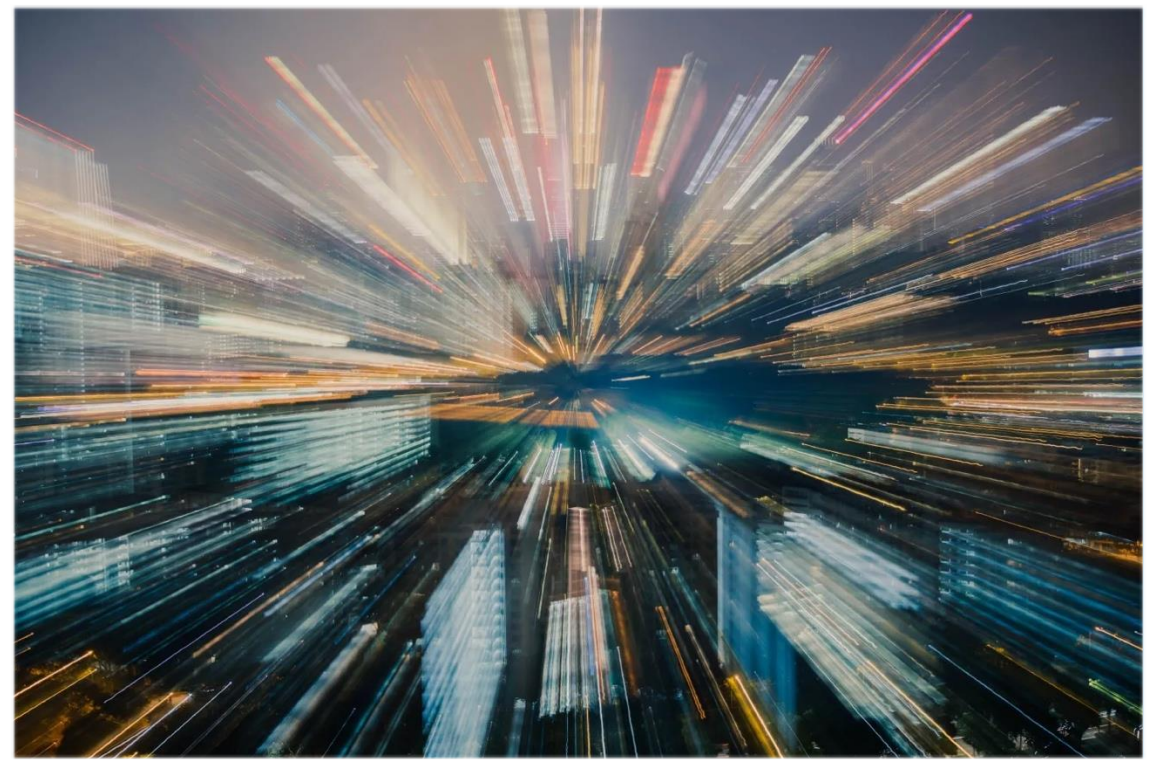


- ICM - Intentional Camera Movement
  - Horizontal or Vertical Motion
  - Rotate Camera During Exposure

### Photoshop Filters

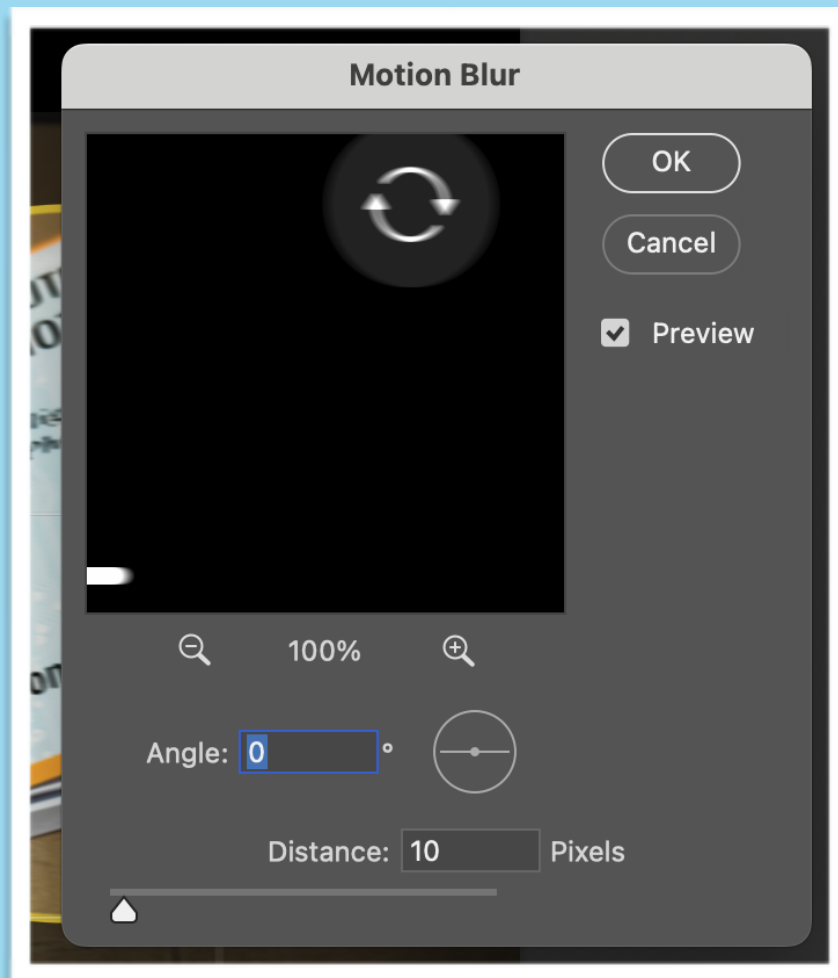
- Filter>Blur>Motion Blur>Spin/Zoom

### Zoom Lens During Exposure



Filter>Blur>Radial Blur>Zoom Blur

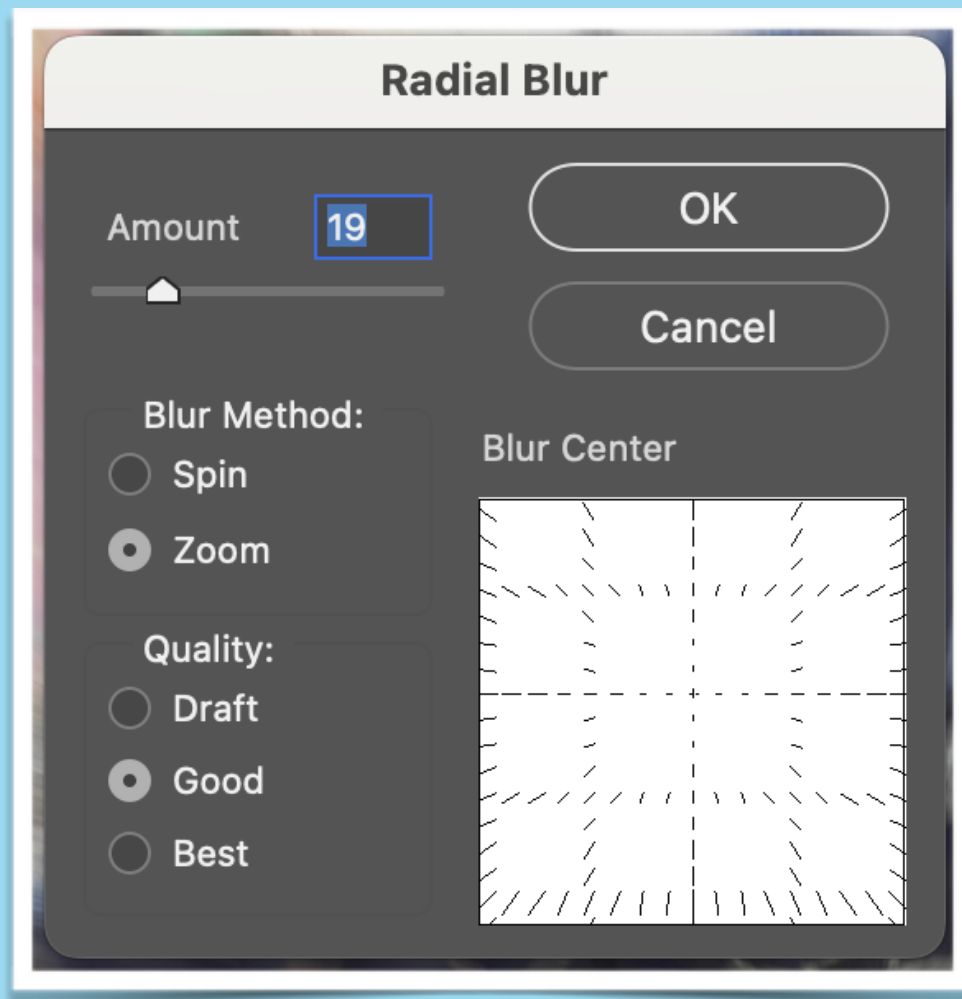
## CREATING MOTION WITH FILTER>MOTION BLUR



The Motion Blur filter lets you set the Angle and Distance (amount) of motion in the entire image or in just a selected area. The effect can be conveniently previewed and changed before committing to a final version.







The Zoom Blur filter lets you select either a Spin Blur or a Zoom Blur AND the position on the image where the blur effect will be centered. The only preview of the blur effect will be visible after you click OK. Changes to the effect and position can only be made after CTRL+Z (Undo) and resetting the values.

